

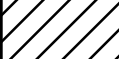
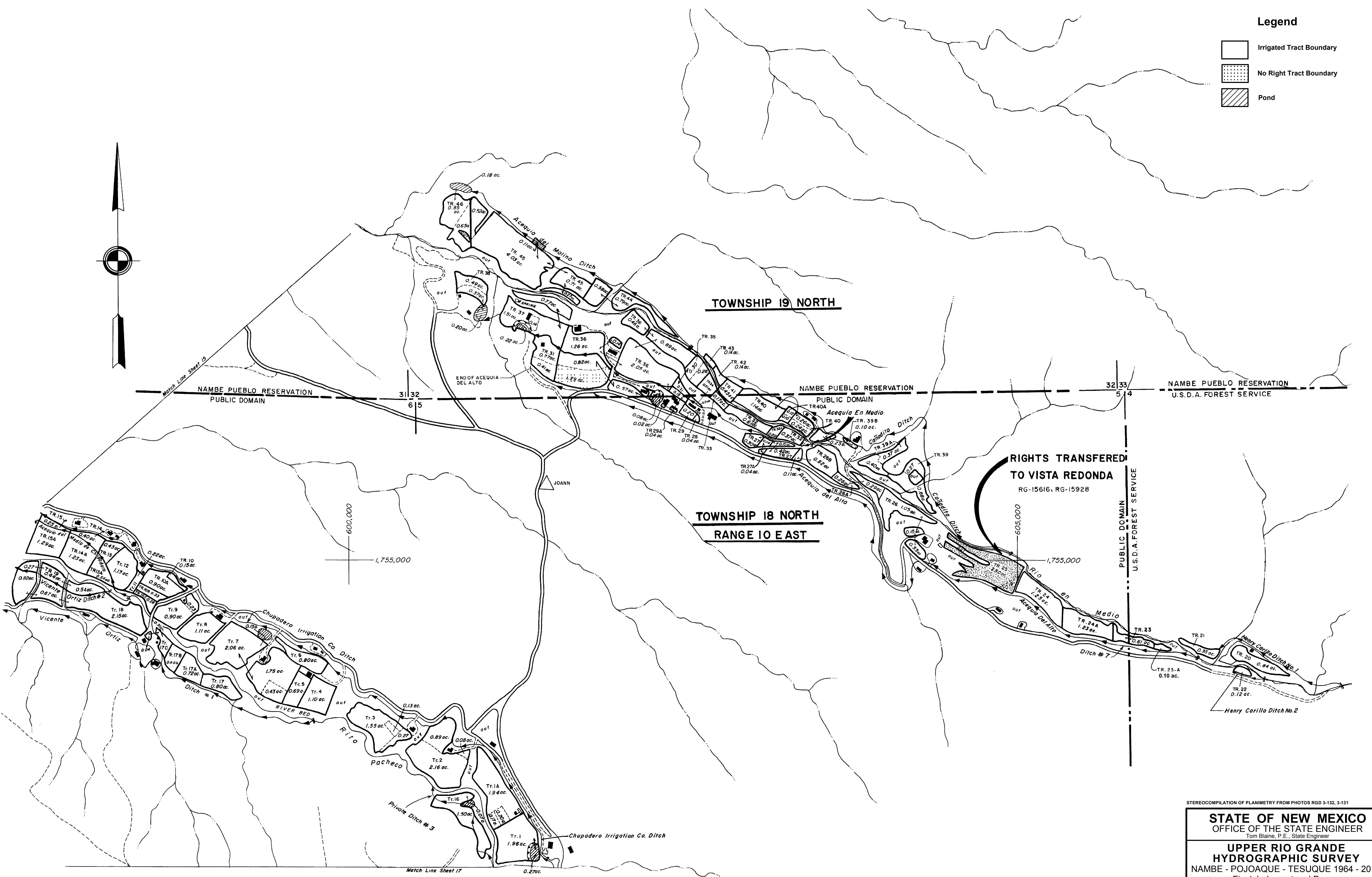
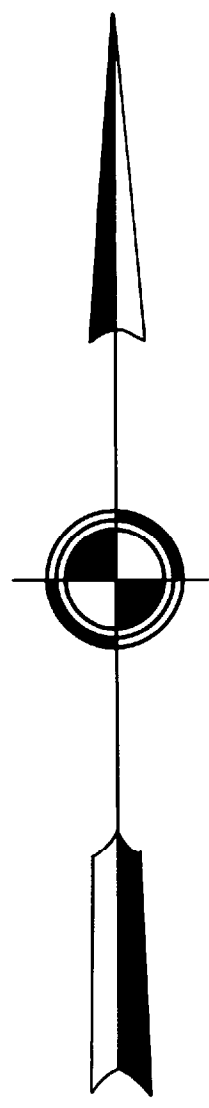


Legend

-  Irrigated Tract Boundary
-  No Right Tract Boundary
-  Pond



RIGHTS TRANSFERRED TO VISTA REDONDA
 RG-15616, RG-15928

STEREOCOPIATION OF PLANIMETRY FROM PHOTOS RGD 3-132, 3-131

STATE OF NEW MEXICO
 OFFICE OF THE STATE ENGINEER
 Tom Blaine, P.E., State Engineer

UPPER RIO GRANDE
 HYDROGRAPHIC SURVEY
 NAMBE - POJOAQUE - TESUQUE 1964 - 2017
 Final Judgment and Decree

ENGINEER SURVEYOR STEREOCOPIATION TRACED BY APPROVED	F. R. ALLEN E. G. COOPER E. L. GONZALES M. H. BOYCE	SCALE 1" = 300' SHEET NO. 16
---	--	---------------------------------